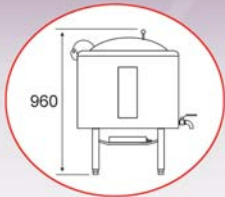
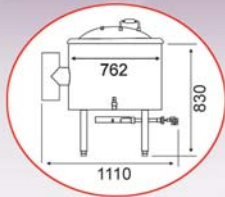


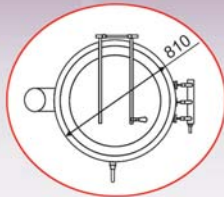
Gas Stainless Steel Boiling Pan



Side View



Front View



Top View



Options:- Stainless steel basket for rice cooking (BP30B)

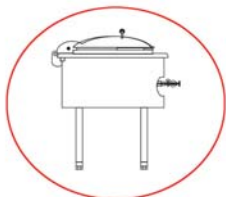
This boiling pan is designed for boiling water and beverages. It can also cook rice with the basket.

- Elegant design
- Body - External and internal, fully 304 stainless steel constructed, hygienic and easy to keep clean.
- Cover - Aluminium with phenolic heat insulated handle.
- Cast iron standard ring burner.

Note:- Model BP30 : No basket

Model	Internal Capacity (Litres)	Internal Dimension (Ø x Depth) (mm)	Gas Consumption (Btu / Hr)	Machine Dimension (Ø x H) (mm)	Basket Dimension (Ø x H) (mm)	Weight (kg)
BP30	110	530 x 530	59,500	1110 x 960	-	56
BP30B	-	-	-	-	460 x 450	4

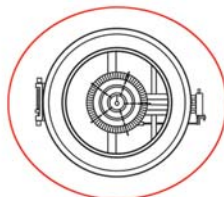
Gas Stainless Steel Kwali Cooker



Side View



Front View



Top View



The gas kwali cooker is designed for you to fry, boil, grill, simmer and braise big quantity of dishes without problems of handling extra utensils.

- Elegant design.
- Body - External fully 304 stainless steel constructed, hygienic and easy to keep clean
- Cover - Aluminium with phenolic heat insulated handle.
- Cast iron wok.
- Cast iron standard ring burner.

Model	Wok Capacity (Litres)	Wok Dimension (Ø x Depth) (mm)	Gas Consumption (Btu / Hr)	Machine Dimension (Ø x Depth) (mm)	Weight (kg)
KC24	20	610 x 160	59,000	930 x 920	44
KC36	80	915 x 250	59,000	1230 x 920	60
KC48	200	1220 x 360	110,000	1500 x 920	137